

LG

Single Package

R410A(50Hz)

0CUK0-01A

TOTAL HVAC

SOLUTION

PROVIDER

ENGINEERING PRODUCT DATA BOOK

Single Package

General Information

Product Data

Single Package

General Information

- 1. Model Line Up**
- 2. Nomenclature**
- 3. Feature and Benefits**

1. Model Line Up

Power Supply (V, Ø, Hz)	Model Name		
	30 RT	35 RT	40 RT
380-415, 3, 50Hz	AK-C3608H00	AK-C4208H00	AK-C4808H00

2. Nomenclature

Model Name	AK	C	360	8	H	0	0
No.	1	2	3	4	5	6	7

No.	Signification
1	Type of Air Conditioner AK : LG Single Package Air Conditioner, R410A
2	Model type C: Cooling Only
3	Cooling capacity grade 360 : 30RT 420 : 35RT 480 : 40RT
4	Electric standard (Volts, Phase, Freq.) 8:380V-415V, 3Ø, 50Hz
5	Type of Flow H : Horizontal
6	Options 0 : No option
7	Development Sequence

3. Feature and Benefits

Roof Top Package Units have been developed & produced to provide not only the ultimate indoor comfort, but also to guarantee long & trouble free operations.

Here lies the reason for the choice of only the highest quality components and design strategist to meet the most important objective such as:

- Efficiency
- Reliability
- Flexibility
- Easy Installation
- Serviceability
- Affordability



■ Standard Features

- Refrigerant : R410A.
- Power Supply: 380-415V/3PH/50Hz.
- Factory Wired with Single Point Power Input.
- Scroll Compressor.
- High Pressure & Low Pressure Safety Switches.
- Power Controller, High/Low Voltage, Phase Loss/Reversal Protection.
- All units are provided with ON-Delay timers for Anti-short cycling.
- Internal Motor Protection for Indoor Motors.
- Belt Drive Blower Motor Assembly.
- Thermal Expansion Valve
- Condenser Fans are Propeller type Direct Driven, draw through Vertical Discharge with fan guard mounted to the Panel.
- Condenser & Evaporator Coils made of Copper tubes and Aluminum fins.
- Weather resistant steel cabinet, qualified for 1000 Hours of Salt Spray test.
- 2" Disposable Air Filter
- Anti Corrosion Heresite Treatment on condenser HEX
- Hydrophilic coating on Evaporator HEX
- IP 55 Class F rating for Blower Motor

3. Feature and Benefits

■ Optional Features

- Electric Heater.
- Overload External protection for Blower Motor.
- Anti Ice thermostat.
- Copper Fins for Evaporator & Condenser coil.
- Stainless Steel Drain Pan.
- Filter Differential pressure Switch.
- Overload External Protection for Compressor.
- Compressor Alternating Switch.
- Hour Run Meter.
- Fan Cycling Switch.
- Rotolock Compressor
- Circuit breaker (MCB) for Compressor & Blower Motor.
- Pump Down System.
- Dual Adjustable Pressure Switch.
- Hot Gas Bypass (with Solenoid).
- Pressure Gauges.
- Oversized Blower Motor & Alternate Drive Package.
- PCB Controller.
- Advanced Microprocessor Controller.
- Adjustable Voltage Monitor.
- UV Light.
- Adjustable Pressure Switch.
- VFD for Blower Motor.
- Soft Starter for Blower Motor.
- Volt free Contacts for Compressor & Blower ON/OFF/TRIP Status.
- Fire Alarm Interlock
- Crankcase Heater for Compressor
- Sight Glass
- 2" Synthetic Filter

Single Package

Product Data

- 1. Specifications**
- 2. Dimensions**
- 3. Wiring Diagrams**
- 4. Piping Diagrams**
- 5. Capacity Tables**
- 6. Fan Performance data**
- 7. Electric Characteristics**
- 8. Operation Range**

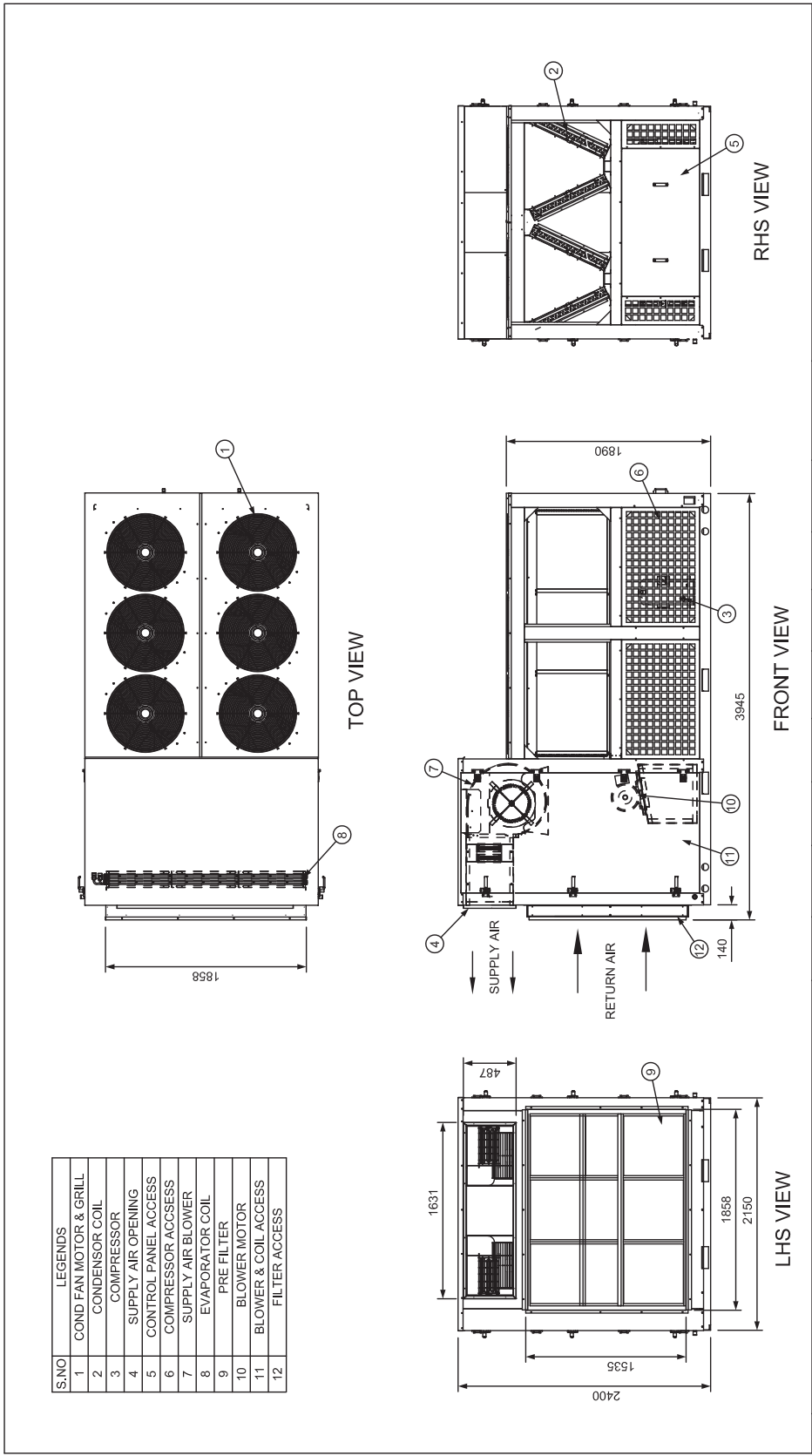
1. Specifications

Description		Unit	UNIT MODEL			
			AK-C3608H00	AK-C4208H00	AK-C4808H00	
Nominal Capacity		RT	30	35	40	
Cooling Capacity @ T1 *		Btu/h	346,697	411,335	465,058	
Power Consumption @ T1 *		W	34,154	40,697	45,585	
EER @ T1 *			10.20	10.10	10.20	
Cooling Capacity @ T3 **		Btu/h	313,226	371,902	414,162	
Power Consumption @ T3 **		W	40,100	47,650	53,005	
EER @ T3 **			7.81	7.80	7.81	
Power Factor @ T3 **			0.9	0.9	0.9	
Nominal Air Flow		CFM	12,000	13,000	14,000	
External Static Pressure		Inch H ₂ O g	1.0"	1.4"	1.4"	
Power Supply		V / Ph / Hz	380-415 / 3 / 50			
Refrigerant	Type		R410A	R410A	R410A	
	Precharged Amount	kg	34.0	40.0	46.0	
Evaporator	Blower	Type	Centrifugal	Centrifugal	Centrifugal	
		Drive	Belt Drive	Belt Drive	Belt Drive	
		Dia x Width	Inch	18" x 18" - Twin	18" x 18" - Twin	18" x 18" - Twin
		Quantity		1	1	1
	Blower Motor	Power Supply	V / Ph / Hz	380-415 / 3 / 50		
		HP		10	10	15
	Air Filter Type			Disposable Air Filter	Disposable Air Filter	Disposable Air Filter
	Coil	Type		Corrugated Al Fin with Inner grooved copper coil	Corrugated Al Fin with Inner grooved copper coil	Corrugated Al Fin with Inner grooved copper coil
		Tube Dia / No of row / FPI		3/8" / 4 / 14	1/2" / 4 / 14	1/2" / 4 / 14
		Material Tubes - Fins		CU-AL	CU-AL	CU-AL
Expansion Valve	Type		TXV	TXV	TXV	
	Quantity		2	2	2	
Condenser	Compressor	Power Supply	V / Ph / Hz	380-415 / 3 / 50		
		Type		Scroll	Scroll	Scroll
		Quantity		2	2	2
		Protection		Internal	Internal	Internal
	Fan	Type		Propeller / Direct Driven	Propeller / Direct Driven	Propeller / Direct Driven
		Quantity		6	6	6
		Dia of Fan	Inch	26"	26"	26"
	Coil	Type of Coil		Corrugated Al Fin with Inner grooved copper coil	Corrugated Al Fin with Inner grooved copper coil	Corrugated Al Fin with Inner grooved copper coil
		Tube Dia / No of row / FPI		3/8" / 2 / 15 3/8" / 3 / 15	3/8" / 3 / 15	3/8" / 4 / 15
	Fan Motor	Power Supply	V / Ph / Hz	240 / 1 / 50		
		HP		1/2	3/4	3/4
		Insulation Class		F	B	B
		Quantity		6	6	6
Condensate Drain Size		Inch	1"	1"	1"	
Dimensions	Length	mm	3,945	3,945	3,945	
	Width		2,150	2,150	2,150	
	Height		2,400	2,400	2,400	
Unit Weight		kg	2,150	2,340	2,480	

Note

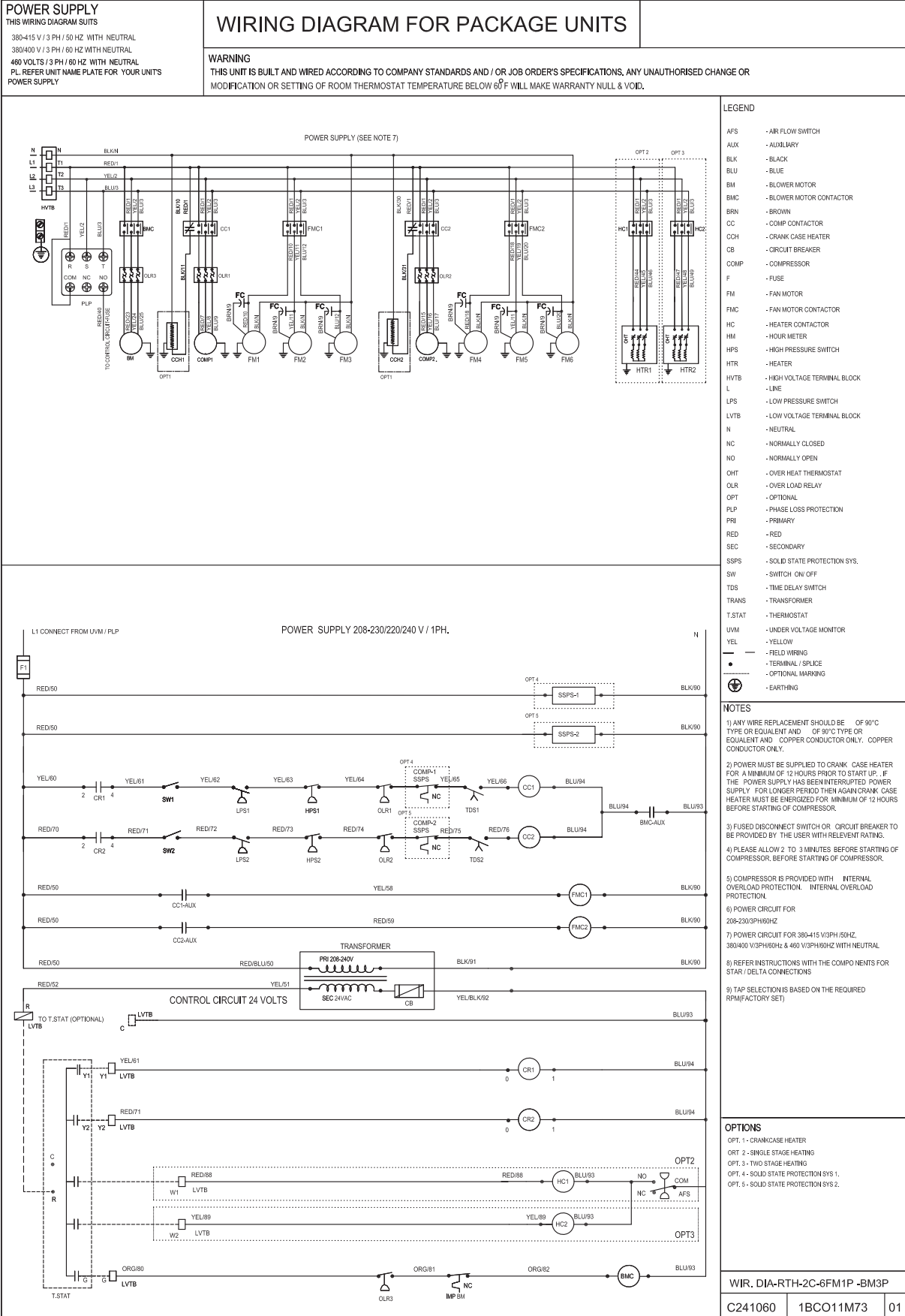
- * : Cooling Capacity & EER are rated @ 80.6°F DBT/66.2°F WBT indoor and 95°F DBT outdoor.
 - ** : Cooling Capacity & EER are rated @ 84.2°F DBT/66.2°F WBT indoor and 115°F DBT outdoor .
- As a result of continuous research and development, the above specifications are subject to changes without notice.

2. Dimensions



3. Wiring diagrams

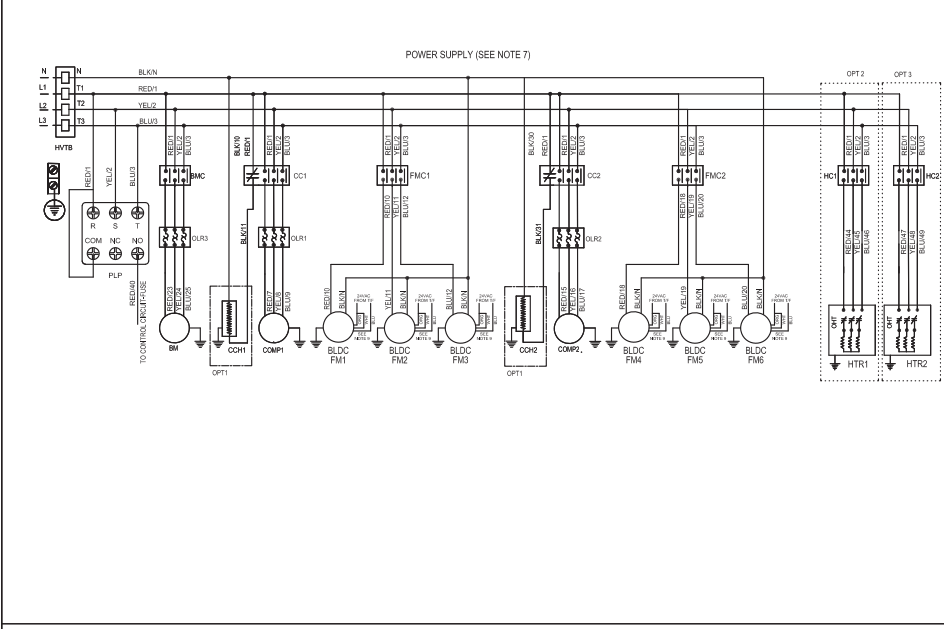
AK-C3608H00



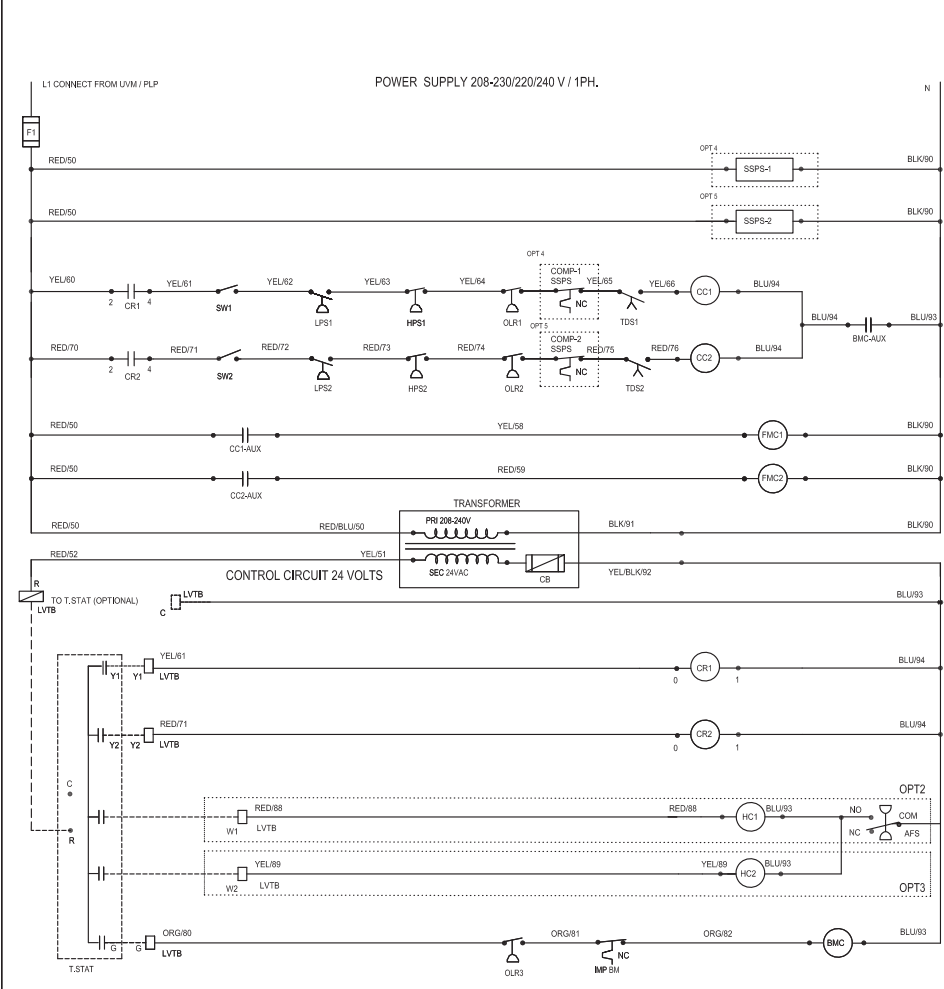
3. Wiring diagrams

AK-C4208H00 / AK-C4808H00

POWER SUPPLY THIS WIRING DIAGRAM SUITS 380-415 V / 3 PH / 50 HZ WITH NEUTRAL 380/400 V / 3 PH / 60 HZ WITH NEUTRAL 480 VOLTS / 3 PH / 60 HZ WITH NEUTRAL PL REFER UNIT NAME PLATE FOR YOUR UNITS POWER SUPPLY	WIRING DIAGRAM FOR PACKAGE UNITS
WARNING THIS UNIT IS BUILT AND WIRED ACCORDING TO COMPANY STANDARDS AND / OR JOB ORDER'S SPECIFICATIONS. ANY UNAUTHORISED CHANGE OR MODIFICATION OR SETTING OF ROOM THERMOSTAT TEMPERATURE BELOW 60°F WILL MAKE WARRANTY NULL & VOID.	



- LEGEND**
- AFS - AIR FLOW SWITCH
 - AUX - AUXILIARY
 - BLK - BLACK
 - BLU - BLUE
 - BM - BLOWER MOTOR
 - BMC - BLOWER MOTOR CONTACTOR
 - BRN - BROWN
 - CC - COMP CONTACTOR
 - COH - CRANK CASE HEATER
 - CB - CIRCUIT BREAKER
 - COMP - COMPRESSOR
 - F - FUSE
 - FM - FAN MOTOR
 - FMC - FAN MOTOR CONTACTOR
 - HC - HEATER CONTACTOR
 - HM - HOUR METER
 - HPS - HIGH PRESSURE SWITCH
 - HTR - HEATER
 - HVTB - HIGH VOLTAGE TERMINAL BLOCK
 - L - LINE
 - LPS - LOW PRESSURE SWITCH
 - LVTB - LOW VOLTAGE TERMINAL BLOCK
 - N - NEUTRAL
 - NC - NORMALLY CLOSED
 - NO - NORMALLY OPEN
 - OHT - OVER HEAT THERMOSTAT
 - OLR - OVER LOAD RELAY
 - OPT - OPTIONAL
 - PLP - PHASE LOSS PROTECTION
 - PRI - PRIMARY
 - RED - RED
 - SEC - SECONDARY
 - SSPS - SOLID STATE PROTECTION SYS.
 - SW - SWITCH ON/OFF
 - TDS - TIME DELAY SWITCH
 - TRANS - TRANSFORMER
 - T.STAT - THERMOSTAT
 - UVM - UNDER VOLTAGE MONITOR
 - YEL - YELLOW
 - FIELD WIRING
 - - TERMINAL / SPLICE
 - ⊕ - OPTIONAL MARKING
 - ⊕ - EARTHING

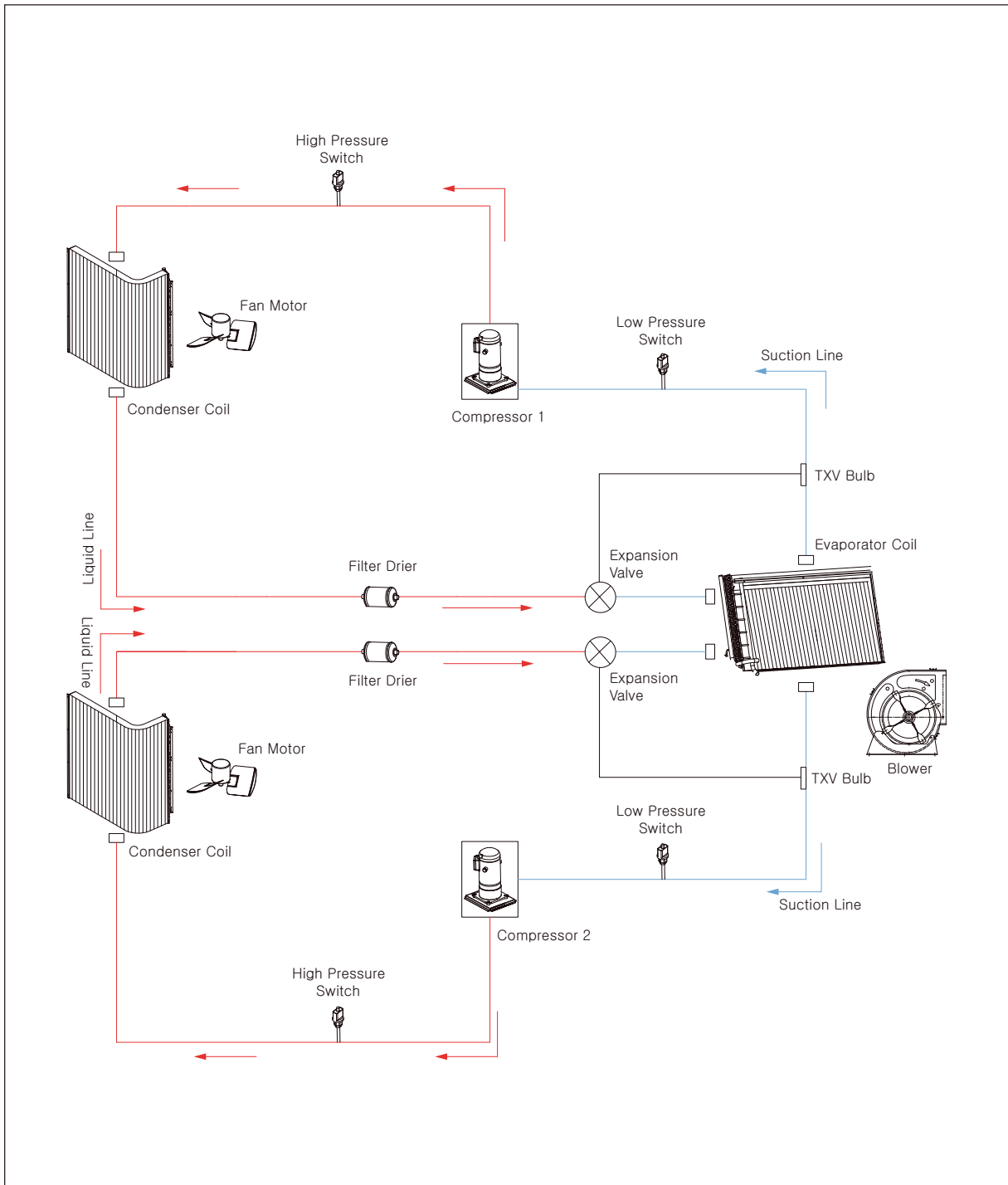


- NOTES**
- 1) ANY WIRE REPLACEMENT SHOULD BE OF 90°C TYPE OR EQUIVALENT AND OF 90°C TYPE OR EQUIVALENT AND OF COPPER CONDUCTOR ONLY. COPPER CONDUCTOR ONLY.
 - 2) POWER MUST BE SUPPLIED TO CRANK CASE HEATER FOR A MINIMUM OF 12 HOURS PRIOR TO START UP. IF THE POWER SUPPLY HAS BEEN INTERRUPTED POWER SUPPLY FOR LONGER PERIOD THEN AGAIN CRANK CASE HEATER MUST BE ENERGIZED FOR MINIMUM OF 12 HOURS BEFORE STARTING OF COMPRESSOR.
 - 3) FUSED DISCONNECT SWITCH OR CIRCUIT BREAKER TO BE PROVIDED BY THE USER WITH RELEVANT RATING.
 - 4) PLEASE ALLOW 2 TO 3 MINUTES BEFORE STARTING OF COMPRESSOR, BEFORE STARTING OF COMPRESSOR.
 - 5) COMPRESSOR IS PROVIDED WITH INTERNAL OVERLOAD PROTECTION. INTERNAL OVERLOAD PROTECTION.
 - 6) POWER CIRCUIT FOR 208-230PH60HZ
 - 7) POWER CIRCUIT FOR 380-415 V/3PH/50HZ, 380/400 V/3PH/60HZ & 480 V/3PH/60HZ WITH NEUTRAL
 - 8) REFER INSTRUCTIONS WITH THE COMPONENTS FOR STAR / DELTA CONNECTIONS
 - 9) TAP SELECTION IS BASED ON THE REQUIRED RPM(FACTORY SET)

- OPTIONS**
- OPT. 1 - CRANKCASE HEATER
 - OPT. 2 - SINGLE STAGE HEATING
 - OPT. 3 - TWO STAGE HEATING
 - OPT. 4 - SOLID STATE PROTECTION SYS. 1.
 - OPT. 5 - SOLID STATE PROTECTION SYS. 2.

WIR. DIA-RTH-2C-6FM1P DC-BM3P		
C240983	1BC011L22	04

4. Piping diagrams



5. Capacity Tables

5.1 Cooling Capacity

■ AK-C3608H00(SI)

Outdoor Ambient Temp. (°CDB)		AMBIENT AIR TEMPRATURE (°C)																				
Air Flow Rate (l/s)	Indoor Ambient Temp.	29.4						35.0			40.6			46.0			48.0			51.7		
		°C DB		°C WB		TC	SC	PI	TC	SC	PI	TC	SC	PI	TC	SC	PI	TC	SC	PI		
			kW		kW		kW		kW		kW		kW		kW		kW		kW			
4,955	27.8	20.6	107.89	75.48	30.94	103.02	73.56	34.29	97.97	71.58	38.16	94.43	70.64	40.39	92.54	69.87	41.98	88.51	68.21	45.69		
		19.0	103.97	80.35	30.58	99.29	78.53	33.93	94.39	76.58	37.81	91.10	75.93	40.02	89.34	75.19	41.64	85.46	73.59	45.32		
		18.3	101.52	86.38	30.36	96.71	84.11	33.67	90.96	81.23	37.42	87.77	80.79	39.68	86.04	80.08	41.27	82.33	78.55	44.94		
	27.0	17.2	98.00	91.75	30.06	93.44	89.58	33.36	88.67	87.32	37.19	85.50	85.50	39.43	83.41	83.41	40.98	79.61	79.61	44.61		
		20.6	107.71	70.08	30.94	102.84	68.22	34.29	97.81	66.27	38.16	94.27	65.36	40.39	92.38	64.66	41.98	88.34	63.12	45.65		
		19.0	103.90	75.32	30.58	99.19	73.47	33.93	94.26	71.52	37.77	91.00	70.74	40.02	89.21	70.04	41.60	85.37	68.43	45.32		
	25.6	18.3	101.42	81.29	30.36	96.68	79.09	33.67	90.99	76.30	37.42	87.67	75.64	39.68	85.94	74.93	41.27	82.23	73.40	44.94		
		17.2	96.27	89.27	29.92	91.75	87.13	33.18	87.07	84.87	37.02	83.83	83.83	39.27	82.13	82.13	40.85	78.55	78.55	44.48		
		20.6	107.42	64.14	30.89	102.55	62.29	34.24	97.53	60.34	38.12	94.01	59.31	40.35	92.12	58.64	41.94	88.09	57.23	45.61		
	24.4	19.0	103.90	70.61	30.58	98.94	68.57	33.89	94.04	66.22	37.77	90.74	65.78	40.02	88.99	65.04	41.60	85.14	63.47	45.27		
		18.3	101.20	76.39	30.36	96.49	74.16	33.67	90.99	71.52	37.42	87.48	70.61	39.64	85.75	69.91	41.23	82.04	68.37	44.90		
		17.2	96.11	84.31	29.88	91.59	82.17	33.18	86.91	79.94	37.02	83.67	79.03	39.22	81.98	78.20	40.81	78.33	76.40	44.48		
5,663	27.8	20.6	106.92	57.98	30.85	102.05	56.13	34.20	97.03	54.18	38.08	93.53	53.04	40.31	91.67	52.30	41.89	87.64	50.89	45.57		
		19.0	103.81	64.70	30.58	98.47	62.60	33.85	93.60	60.72	37.72	90.30	59.82	39.93	88.54	59.09	41.56	84.76	57.55	45.23		
		18.3	100.83	71.02	30.32	96.18	69.10	33.63	90.87	66.59	37.42	87.10	65.33	39.60	85.40	64.66	41.18	81.66	63.15	44.86		
	27.0	17.2	95.77	79.15	29.88	91.28	77.02	33.14	86.60	74.79	36.97	83.38	73.78	39.18	81.69	72.95	40.77	78.01	71.15	44.44		
		20.6	102.93	88.36	30.50	97.84	86.13	33.80	92.97	84.21	37.64	89.72	83.70	39.89	87.96	82.97	41.48	84.21	81.43	45.15		
		19.0	106.69	80.35	31.20	105.54	78.31	34.55	100.10	76.10	38.43	96.41	75.19	40.60	94.49	74.39	42.23	90.33	72.66	45.90		
	25.6	18.3	106.67	86.03	30.85	101.74	84.05	34.15	96.65	82.04	38.03	93.14	81.33	40.27	91.26	80.53	41.85	87.19	78.84	45.52		
		17.2	98.69	95.61	30.14	93.98	93.35	33.40	89.11	89.11	37.24	85.50	85.50	39.43	83.80	83.09	41.02	80.18	80.18	44.69		
		20.6	110.16	68.19	31.16	105.07	66.27	34.51	99.66	64.48	38.38	95.96	63.79	40.56	94.04	63.12	42.14	89.88	61.39	45.86		
	24.4	19.0	106.29	74.79	30.80	101.36	72.84	34.15	96.27	70.80	37.99	92.83	69.94	40.23	90.91	69.14	41.81	86.84	67.44	45.48		
		18.3	103.18	80.69	30.54	97.75	78.21	33.80	92.85	76.26	37.64	89.46	75.57	39.85	87.71	74.84	41.44	83.86	73.24	45.11		
		17.2	98.53	90.02	30.10	93.82	87.79	33.40	88.95	85.47	37.19	85.53	84.53	39.43	83.41	83.35	40.98	79.22	79.22	44.56		
6,135	27.8	20.6	109.62	61.15	31.11	104.56	59.27	34.46	99.19	57.42	38.30	95.48	56.59	40.52	93.56	55.92	42.10	89.40	54.51	45.77		
		19.0	105.82	68.73	30.76	100.92	66.81	34.11	95.83	64.86	37.94	92.38	63.95	40.18	90.49	63.19	41.77	86.46	61.52	45.44		
		18.3	102.96	74.98	30.50	97.53	72.56	33.76	92.47	70.45	37.59	89.08	69.68	39.81	87.29	68.95	41.39	83.45	67.38	45.07		
	27.0	17.2	98.19	84.21	30.10	93.48	81.98	33.36	88.64	79.66	37.19	85.34	78.74	39.43	83.41	77.68	40.98	79.06	75.48	44.56		
		20.6	111.73	70.99	31.29	106.39	69.23	34.64	100.86	67.06	38.47	97.08	65.97	40.68	95.10	65.14	42.27	90.87	63.41	45.94		
		19.0	107.80	77.55	30.94	102.74	75.54	34.29	97.56	73.47	38.12	93.88	72.50	40.35	91.96	71.70	41.94	87.80	70.00	45.61		
	25.6	18.3	103.97	83.36	30.58	99.13	81.44	33.93	94.07	79.41	37.77	90.62	78.74	39.97	88.79	77.97	41.56	84.86	76.34	45.23		
		17.2	99.88	93.63	30.23	95.11	91.34	33.54	90.11	88.92	37.33	85.85	85.85	39.47	83.99	83.99	41.06	80.57	80.57	44.73		
		20.6	111.16	63.26	31.25	105.88	61.56	34.59	100.35	59.77	38.43	96.57	58.96	40.64	94.62	58.29	42.23	90.39	56.85	45.90		
	24.4	19.0	107.30	71.36	30.89	102.27	69.38	34.24	97.09	67.31	38.08	93.43	66.29	40.31	91.51	65.49	41.89	87.38	63.76	45.52		
		18.3	103.72	77.30	30.58	98.72	75.23	33.89	93.66	73.22	37.72	90.20	72.40	39.93	88.38	71.64	41.52	84.47	70.04	45.19		
		17.2	99.54	87.42	30.19	94.73	85.12	33.49	89.83	82.83	37.33	85.75	81.37	39.47	83.77	80.41	41.02	79.89	78.77	44.65		
29.0	19.0	106.61	98.91	30.85	101.61	96.90	34.15	96.46	94.83	38.03	92.92	92.92	40.23	91.03	91.03	41.81	86.94	86.94	45.48			

Note

1. TC : Gross Total Cooling Capacity, SC : Sensible Cooling Capacity, PI : Total Power Input, DB : Dry Bulb Temperature, WB : Wet Bulb Temperature.

5. Capacity Tables

AK-C3608H00(English)

Table with columns for Outdoor Ambient Temp, Air Flow Rate (CFM), Indoor Ambient Temp, and Ambient Air Temperature (°F) ranging from 85.00 to 125.00. The table contains multiple rows for different indoor temperatures (82, 80.6, 78, 76, 84.2) and air flow rates (10,500, 12,000, 13,000 CFM). Each cell contains TC, SC, and PI values in both kBTu/hr and kW.

Note

1. TC : Gross Total Cooling Capacity, SC : Sensible Cooling Capacity, PI : Total Power Input, DB : Dry Bulb Temperature, WB : Wet Bulb Temperature.

6. Fan Performance data

■ AK-C3608H00

External Static Pressure																			
Air Flow (CFM)	0.4		0.6		0.8		1.0		1.2		1.4		1.6		1.8		2.0		
	RPM	BHP	RPM	BHP	RPM	BHP	RPM	BHP	RPM	BHP	RPM	BHP	RPM	BHP	RPM	BHP	RPM	BHP	
8,500	647	2.72	694	2.92	754	3.65	800	3.93	838	4.46	872	4.93	900	5.32	927	5.78	972	6.11	
9,000	644	2.87	689	3.15	746	3.79	793	4.07	829	4.60	862	5.06	890	5.45	919	5.91	963	6.28	
10,000	637	3.17	679	3.62	730	4.07	780	4.34	811	4.88	843	5.33	871	5.70	902	6.15	945	6.61	
10,500	634	3.32	674	3.85	723	4.21	774	4.48	802	5.02	834	5.47	861	5.83	894	6.28	936	6.77	
11,000	630	3.47	670	4.09	715	4.36	767	4.62	793	5.16	824	5.60	851	5.96	886	6.40	927	6.93	
12,000	628	4.00	672	4.42	706	4.67	758	4.96	785	5.58	810	6.00	840	6.25	887	6.67	916	7.25	
13,000	624	4.56	668	5.06	703	5.40	751	5.66	777	6.17	800	6.50	830	6.67	879	7.18	914	7.77	

Note

1. Data includes losses for filters, unit casting & wet coil
2. Shaded region indicates alternate drive requirement
3. Bold value in RPM indicates Blower speed with factory settings.

■ AK-C4208H00

External Static Pressure																			
Air Flow (CFM)	0.4		0.6		0.8		1.0		1.2		1.4		1.6		1.8		2.0		
	RPM	BHP	RPM	BHP	RPM	BHP	RPM	BHP	RPM	BHP	RPM	BHP	RPM	BHP	RPM	BHP	RPM	BHP	
9,500	640	3.02	684	3.39	738	3.93	787	4.20	820	4.74	853	5.20	881	5.57	911	6.03	954	6.44	
10,000	637	3.17	679	3.62	730	4.07	780	4.34	811	4.88	843	5.33	871	5.70	902	6.15	945	6.61	
11,000	630	3.47	670	4.09	715	4.36	767	4.62	793	5.16	824	5.60	851	5.96	886	6.40	927	6.93	
11,500	629	3.73	671	4.25	711	4.51	763	4.79	789	5.37	817	5.80	845	6.10	887	6.53	921	7.09	
12,000	628	4.00	672	4.42	706	4.67	758	4.96	785	5.58	810	6.00	840	6.25	887	6.67	916	7.25	
13,000	624	4.56	668	5.06	703	5.40	751	5.66	777	6.17	800	6.50	830	6.67	879	7.18	914	7.77	
14,000	622	5.21	666	5.75	701	6.15	750	6.48	772	6.80	796	7.05	824	7.21	877	7.62	911	8.50	

Note

1. Data includes losses for filters, unit casting & wet coil
2. Shaded region indicates alternate drive requirement
3. Bold value in RPM indicates Blower speed with factory settings.

■ AK-C4808H00

External Static Pressure																			
Air Flow (CFM)	0.4		0.6		0.8		1.0		1.2		1.4		1.6		1.8		2.0		
	RPM	BHP	RPM	BHP	RPM	BHP	RPM	BHP	RPM	BHP	RPM	BHP	RPM	BHP	RPM	BHP	RPM	BHP	
10,000	637	3.17	679	3.62	730	4.07	780	4.34	811	4.88	843	5.33	871	5.70	902	6.15	945	6.61	
11,000	630	3.47	670	4.09	715	4.36	767	4.62	793	5.16	824	5.60	851	5.96	886	6.40	927	6.93	
12,000	628	4.00	672	4.42	706	4.67	758	4.96	785	5.58	810	6.00	840	6.25	887	6.67	916	7.25	
13,000	624	4.56	668	5.06	703	5.40	751	5.66	777	6.17	800	6.50	830	6.67	879	7.18	914	7.77	
14,000	622	5.21	666	5.75	701	6.15	750	6.48	772	6.80	796	7.05	824	7.21	877	7.62	911	8.50	
15,000	620	5.89	665	6.53	700	7.01	748	7.34	770	7.53	795	7.70	823	7.81	875	8.25	910	9.24	

Note

1. Data includes losses for filters, unit casting & wet coil
2. Shaded region indicates alternate drive requirement
3. Bold value in RPM indicates Blower speed with factory settings.

7. Electric characteristics

■ Cool Mode

Model	V/PH/Hz	Operating Voltage		Compressor			Condenser Motor			Blower Motor		MCA	MOCP	
		MIN	MAX	TYPE	RLA	LRA	QTY	HP	AMPS	QTY	HP	AMPS	AMPS	AMPS
AK-C3608H00	380-415/3/50	342	456	SCR	26.3	174	1	1/2	3.0	6	10	14.5	96	125
					29.2	219	1							
AK-C4208H00	380-415/3/50	342	456	SCR	29.2	219	2	3/4	5.7	6	10	14.5	115	145
AK-C4808H00	380-415/3/50	342	456	SCR	29.2	219	1	3/4	5.7	6	15	22.0	125	165
					36.8	287.5	1							

Note

1. SCR : Scroll Compressor, RLA : Running Load Amps, LAR : Locked Rotor Amps, FLA : Full Load Amps, MCA : Minimum Circuit Amps, MOCP : Maximum Over Current Protection

■ Electric Heater Mode

Model	POWER SUPPLY			Blower Motor		Heater Capacity	MCA	MOCP
	V/Ph/Hz	MIN	MAX	HP	FLA			
AK-C3608H00	380-415/3/50	342	456	10	14.5	40	70	85
						45	80	95
						50	90	105
AK-C4208H00	380-415/3/50	342	456	10	14.5	40	70	85
						45	80	95
						50	90	105
AK-C4808H00	380-415/3/50	342	456	15	22	40	70	95
						45	80	105
						50	90	110

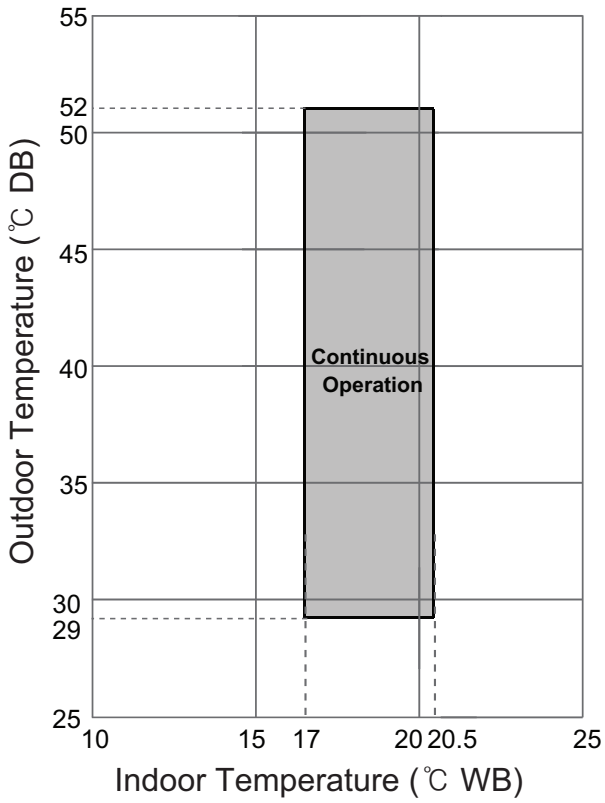
Note

1. SCR : Scroll Compressor, RLA : Running Load Amps, LAR : Locked Rotor Amps, FLA : Full Load Amps, MCA : Minimum Circuit Amps, MOCP : Maximum Over Current Protection

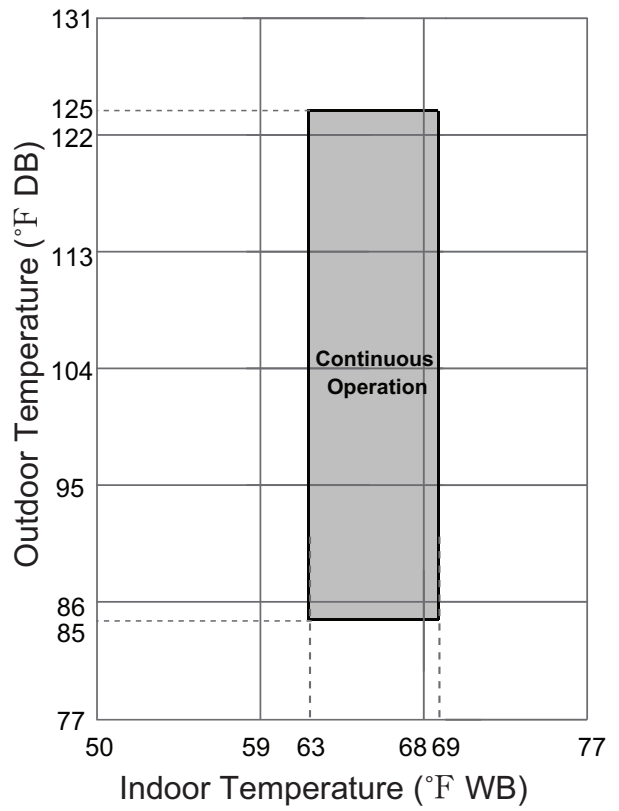
8. Operation range

■ Cooling

SI unit



English Unit





Air Solution

LG Electronics Inc, 128, Yeoui-daero,
Yeongdeungpo-gu, Seoul, Korea
(07336)
<http://partner.lge.com>

Copyright © 2021 LG Electronics Inc.
All Rights Reserved.
Printed in Korea December / 2021

The air conditioners manufactured by LG have received ISO9001 certificate for quality assurance and ISO14001 certificate for environmental management system.
The specifications, designs, and information in this brochure are subject to change without notice.